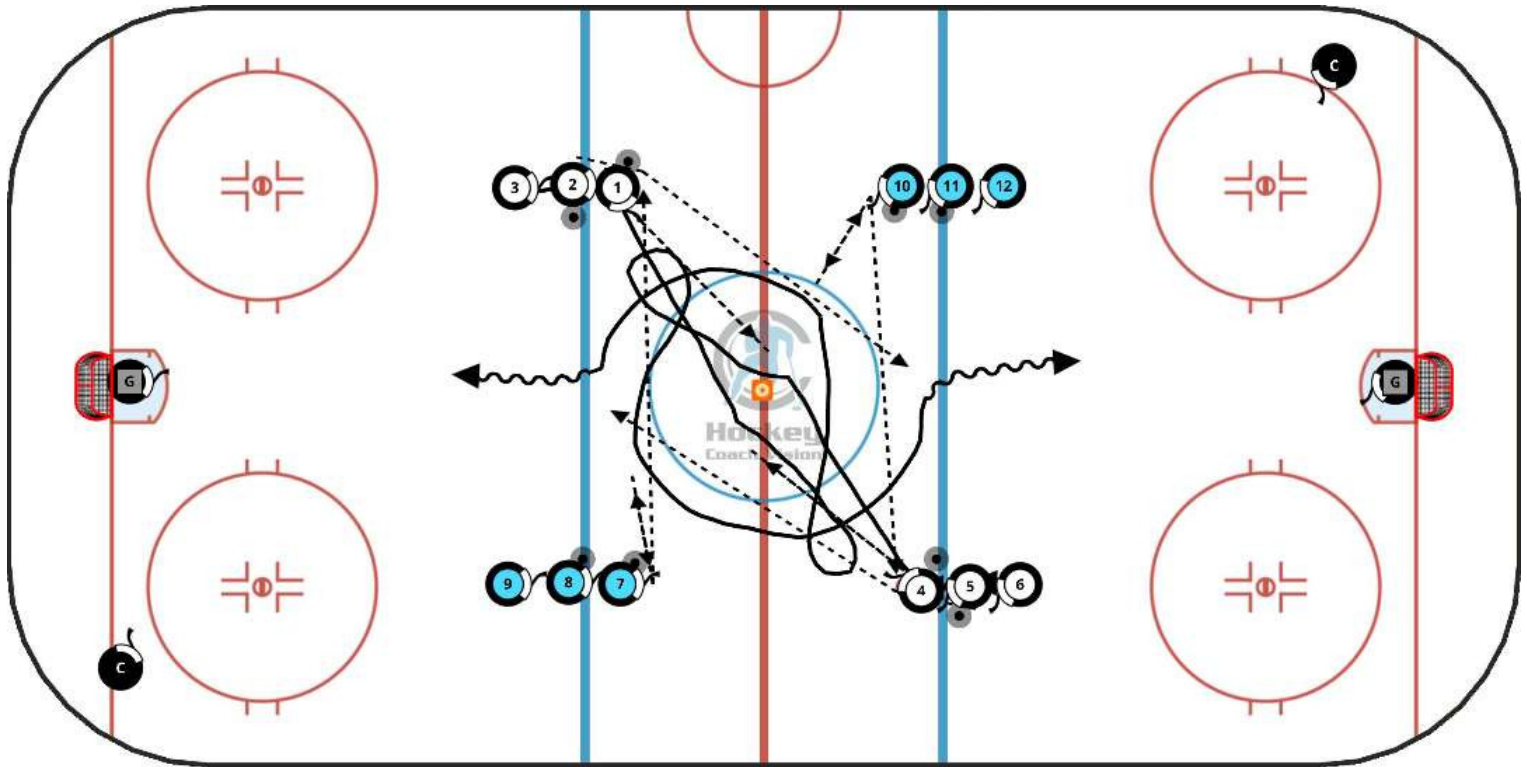


ARNO ONE TOUCH



DESCRIPTION

SETUP

P1 receives a pass from P5, passes it back to him then makes a quick turn, exchanges passes with P10 then heads up ice.

P10 passes quickly to P5 who passes quickly to P1 who is cutting to the middle of the far blueline.

TIPS FROM THE COACH

- o Gretzky Turns. Accelerate out of tight turns. Skate hard
- o Tape to tape passes

ASSOCIATED WITH

U7, U9, U11, U13, U15, U18, Skating, Shooting, Edge Control, Acceleration, Individual, Passing